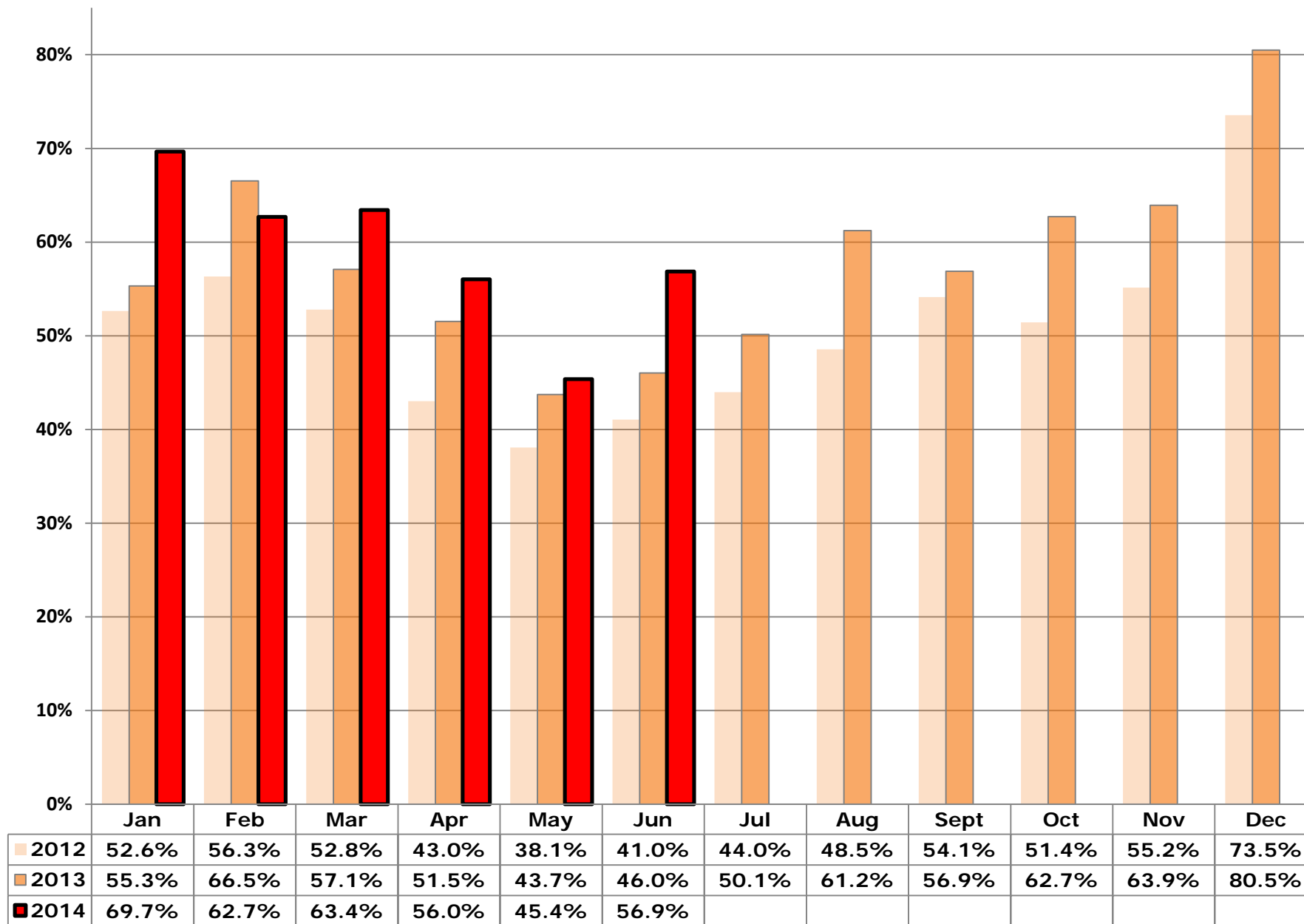


### Sacramento CA partners - Live Release Rate -- Year over Year



## Sacramento CA partners: Dashboard Summary: 2014

Indicators - 2014	Rate/000 People	Dogs (adults)	Puppies & Neonates	Cats (adults)	Kittens & Neonates	Total YTD
<b>Live Release Rate</b>		<b>61.3%</b>	<b>88.1%</b>	<b>51.4%</b>	<b>47.6%</b>	<b>57.9%</b>
Total Live Release	3.04	4,074	747	1,992	1,053	<b>7,866</b>
Total Intake (net Returns)	5.24	6,648	848	3,875	2,213	<b>13,584</b>
Total Stray Intake	3.41	3,875	587	2,420	1,955	<b>8,837</b>
Total Returns	0.14	199	32	95	30	<b>356</b>
Total Returned to Owner (RTO)	0.51	1,199	36	83	9	<b>1,327</b>
Total Adopted (net Returns)	1.91	2,328	605	1,124	886	<b>4,943</b>
Total Returned to Field	0.23	n/a	n/a	552	42	<b>594</b>
Transferred out of Partnership for Placement	0.39	547	106	233	116	<b>1,002</b>
Total Animals Euthanized	1.79	2,401	100	1,663	476	<b>4,640</b>
Targeted Spay/Neuter Surgeries	3.18	3,511	491	3,562	675	<b>8,239</b>
<i>Other Rates:</i>						
RTO Rate (as % of Stray intake)		31%	6%	3%	0%	<b>15%</b>
Adoption Rate (as % of Total Intake)		35%	71%	29%	40%	<b>36%</b>
Returned to Field Rate (% of Feline Stray Intake)		n/a	n/a	23%	2%	<b>14%</b>
Transfer to Non-Partner Rate (% of Total Intake)		8%	13%	6%	5%	<b>7%</b>
Return Rate (% of Adoptions)		8%	5%	8%	3%	<b>7%</b>
Euthanasia Rate (as % of Total Intake)		36%	12%	43%	22%	<b>34%</b>

Targeted Spay/ Neuter and TNR	Q1	Q2	Q3	Q4	Total YTD
# targeted S/N conducted on cats (other than TNR)	789	764	0	0	<b>1,553</b>
# targeted S/N conducted on kittens (other than TNR)	214	243	0	0	<b>457</b>
# targeted S/N conducted on dogs	1,665	1,846	0	0	<b>3,511</b>
# targeted S/N conducted on puppies	249	242	0	0	<b>491</b>
# Cat(s) TNR	1,089	920	0	0	<b>2,009</b>
# Kitten(s) TNR	48	170	0	0	<b>218</b>
<b>Total Spay/Neuter and TNR</b>	<b>4,054</b>	<b>4,185</b>	<b>0</b>	<b>0</b>	<b>8,239</b>

## Sacramento CA partners: Dashboard Summary: 2014

Intake and Outcomes	All CANINES				
	Q1	Q2	Q3	Q4	Total
<b>Live Release Rate</b>	<b>64.4%</b>	<b>64.2%</b>	-	-	<b>64.3%</b>
# Total Live Release	2,457	2,364	0	0	<b>4,821</b>
# Total Intake (net returns)	3,813	3,683	0	0	<b>7,496</b>
Subcategory: # of Strays	2,233	2,229	0	0	<b>4,462</b>
Subcategory: # returned within 30 days of adoption	132	99	0	0	<b>231</b>
# Intakes processed through partner transfers	58	32	0	0	<b>90</b>
# Returned-to-Owner (RTO)	616	619	0	0	<b>1,235</b>
# Adoptions (net Returns)	1,496	1,437	0	0	<b>2,933</b>
# Adoptions processed	1,628	1,536	0	0	<b>3,164</b>
# transferred to partners	59	36	0	0	<b>95</b>
# transferred out of the partnership for Placement	345	308	0	0	<b>653</b>
# euthanized per owner request	391	365	0	0	<b>756</b>
# euthanized other than owner request	872	873	0	0	<b>1,745</b>
# died in care	8	10	0	0	<b>18</b>
# lost in care	3	1	0	0	<b>4</b>
<i>Other Rates:</i>					
RTO Rate (as % of Stray intake)	28%	28%	-	-	<b>28%</b>
Adoption Rate (as % of Total Intake)	39%	39%	-	-	<b>39%</b>
Transfer to Non-Partner Rate (% of Total Intake)	9%	8%	-	-	<b>9%</b>
Return Rate (% of Adoptions)	8%	6%	-	-	<b>7%</b>
Euthanasia Rate (as % of Total Intake)	33%	34%	-	-	<b>33%</b>

Intake and Outcomes	All FELINES				
	Q1	Q2	Q3	Q4	Total
<b>Live Release Rate</b>	<b>66.6%</b>	<b>42.0%</b>	-	-	<b>50.0%</b>
# Total Live Release	1,321	1,724	0	0	<b>3,045</b>
# Total Intake (net returns)	1,982	4,106	0	0	<b>6,088</b>
Subcategory: # of Strays	1,149	3,226	0	0	<b>4,375</b>
Subcategory: # returned within 30 days of adoption	67	58	0	0	<b>125</b>
# Intakes processed through partner transfers	15	5	0	0	<b>20</b>
# Returned-to-Owner (RTO)	33	59	0	0	<b>92</b>
# Adoptions (net Returns)	898	1,112	0	0	<b>2,010</b>
# Adoptions processed	965	1,170	0	0	<b>2,135</b>
# Returned to Field	254	340	0	0	<b>594</b>
# transferred to partners	17	5	0	0	<b>22</b>
# transferred out of the partnership for Placement	136	213	0	0	<b>349</b>
# euthanized per owner request	218	208	0	0	<b>426</b>
# euthanized other than owner request	455	1,258	0	0	<b>1,713</b>
# died in care	26	79	0	0	<b>105</b>
# lost in care	11	11	0	0	<b>22</b>
<i>Other Rates:</i>					
RTO Rate (as % of Stray intake)	3%	2%	-	-	<b>2%</b>
Adoption Rate (as % of Total Intake)	45%	27%	-	-	<b>33%</b>
Returned to Field Rate (% of Stray Intake)	22%	11%	-	-	<b>14%</b>
Transfer to Non-Partner Rate (% of Total Intake)	7%	5%	-	-	<b>6%</b>
Return Rate (% of Adoptions)	7%	5%	-	-	<b>6%</b>
Euthanasia Rate (as % of Total Intake)	34%	36%	-	-	<b>35%</b>

## Sacramento CA partners: Dashboard Summary: 2014

Intake and Outcomes	Dogs				
	Q1	Q2	Q3	Q4	Total
<b>Live Release Rate</b>	<b>60.4%</b>	<b>62.1%</b>	-	-	<b>61.3%</b>
# Total Intake (net returns)	3,355	3,293	0	0	<b>6,648</b>
Subcategory: # of Strays	1,925	1,950	0	0	<b>3,875</b>
Subcategory: # returned within 30 days of adoption	109	90	0	0	<b>199</b>
# Intakes processed through partner transfers	53	31	0	0	<b>84</b>
# Returned-to-Owner (RTO)	594	605	0	0	<b>1,199</b>
# Adoptions (net Returns)	1,138	1,190	0	0	<b>2,328</b>
# Adoptions processed	1,247	1,280	0	0	<b>2,527</b>
# transferred to partners	54	35	0	0	<b>89</b>
# transferred out of the partnership for Placement	296	251	0	0	<b>547</b>
# euthanized per owner request	384	360	0	0	<b>744</b>
# euthanized other than owner request	831	826	0	0	<b>1,657</b>
# died in care	6	8	0	0	<b>14</b>
# lost in care	1	1	0	0	<b>2</b>
<i>Other Rates:</i>					
RTO Rate (as % of Stray intake)	31%	31%	-	-	<b>31%</b>
Adoption Rate (as % of Total Intake)	34%	36%	-	-	<b>35%</b>
Transfer to Non-Partner Rate (% of Total Intake)	9%	8%	-	-	<b>8%</b>
Return Rate (% of Adoptions)	9%	7%	-	-	<b>8%</b>
Euthanasia Rate (as % of Total Intake)	36%	36%	-	-	<b>36%</b>

Intake and Outcomes	Puppies & Neonate Canines				
	Q1	Q2	Q3	Q4	Total
<b>Live Release Rate</b>	<b>93.7%</b>	<b>81.5%</b>	-	-	<b>88.1%</b>
# Total Intake (net returns)	458	390	0	0	<b>848</b>
Subcategory: # of Strays	308	279	0	0	<b>587</b>
Subcategory: # returned within 30 days of adoption	23	9	0	0	<b>32</b>
# Intakes processed through partner transfers	5	1	0	0	<b>6</b>
# Returned-to-Owner (RTO)	22	14	0	0	<b>36</b>
# Adoptions (net Returns)	358	247	0	0	<b>605</b>
# Adoptions processed	381	256	0	0	<b>637</b>
# transferred to partners	5	1	0	0	<b>6</b>
# transferred out of the partnership for Placement	49	57	0	0	<b>106</b>
# euthanized per owner request	7	5	0	0	<b>12</b>
# euthanized other than owner request	41	47	0	0	<b>88</b>
# died in care	2	2	0	0	<b>4</b>
# lost in care	2	0	0	0	<b>2</b>
<i>Other Rates:</i>					
RTO Rate (as % of Stray intake)	7%	5%	-	-	<b>6%</b>
Adoption Rate (as % of Total Intake)	78%	63%	-	-	<b>71%</b>
Transfer to Non-Partner Rate (% of Total Intake)	11%	15%	-	-	<b>13%</b>
Return Rate (% of Adoptions)	6%	4%	-	-	<b>5%</b>
Euthanasia Rate (as % of Total Intake)	10%	13%	-	-	<b>12%</b>

## Sacramento CA partners: Dashboard Summary: 2014

Intake and Outcomes	Cats				Total
	Q1	Q2	Q3	Q4	
<b>Live Release Rate</b>	<b>62.6%</b>	<b>43.2%</b>	-	-	<b>51.4%</b>
# Total Intake (net returns)	1,646	2,229	0	0	<b>3,875</b>
Subcategory: # of Strays	885	1,535	0	0	<b>2,420</b>
Subcategory: # returned within 30 days of adoption	51	44	0	0	<b>95</b>
# Intakes processed through partner transfers	10	5	0	0	<b>15</b>
# Returned-to-Owner (RTO)	33	50	0	0	<b>83</b>
# Adoptions (net Returns)	654	470	0	0	<b>1,124</b>
# Adoptions processed	705	514	0	0	<b>1,219</b>
# Returned to Field	241	311	0	0	<b>552</b>
# transferred to partners	12	5	0	0	<b>17</b>
# transferred out of the partnership for Placement	102	131	0	0	<b>233</b>
# euthanized per owner request	216	201	0	0	<b>417</b>
# euthanized other than owner request	399	847	0	0	<b>1,246</b>
# died in care	17	18	0	0	<b>35</b>
# lost in care	6	10	0	0	<b>16</b>
<i>Other Rates:</i>					
RTO Rate (as % of Stray intake)	4%	3%	-	-	<b>3%</b>
Adoption Rate (as % of Total Intake)	40%	21%	-	-	<b>29%</b>
Returned to Field Rate (% of Stray Intake)	27%	20%	-	-	<b>23%</b>
Transfer to Non-Partner Rate (% of Total Intake)	6%	6%	-	-	<b>6%</b>
Return Rate (% of Adoptions)	7%	9%	-	-	<b>8%</b>
Euthanasia Rate (as % of Total Intake)	37%	47%	-	-	<b>43%</b>

Intake and Outcomes	Kittens & Neonate Felines				Total
	Q1	Q2	Q3	Q4	
<b>Live Release Rate</b>	<b>86.6%</b>	<b>40.6%</b>	-	-	<b>47.6%</b>
# Total Intake (net returns)	336	1,877	0	0	<b>2,213</b>
Subcategory: # of Strays	264	1,691	0	0	<b>1,955</b>
Subcategory: # returned within 30 days of adoption	16	14	0	0	<b>30</b>
# Intakes processed through partner transfers	5	0	0	0	<b>5</b>
# Returned-to-Owner (RTO)	0	9	0	0	<b>9</b>
# Adoptions (net Returns)	244	642	0	0	<b>886</b>
# Adoptions processed	260	656	0	0	<b>916</b>
# Returned to Field	13	29	0	0	<b>42</b>
# transferred to partners	5	0	0	0	<b>5</b>
# transferred out of the partnership for Placement	34	82	0	0	<b>116</b>
# euthanized per owner request	2	7	0	0	<b>9</b>
# euthanized other than owner request	56	411	0	0	<b>467</b>
# died in care	9	61	0	0	<b>70</b>
# lost in care	5	1	0	0	<b>6</b>
<i>Other Rates:</i>					
RTO Rate (as % of Stray intake)	0%	1%	-	-	<b>0%</b>
Adoption Rate (as % of Total Intake)	73%	34%	-	-	<b>40%</b>
Returned to Field Rate (% of Stray Intake)	5%	2%	-	-	<b>2%</b>
Transfer to Non-Partner Rate (% of Total Intake)	10%	4%	-	-	<b>5%</b>
Return Rate (% of Adoptions)	6%	2%	-	-	<b>3%</b>
Euthanasia Rate (as % of Total Intake)	17%	22%	-	-	<b>22%</b>

## ASPCA: 2014 Animal Stats Data Definitions

Rates	
Live Release Rate	# Live Release/Total Intake
Adoption Rate	# Adoptions (net returns within 30 days)/Total Intake
Returns 30 Rate	# Returns in 30 days/# Adoptions Processed
RTO Rate	# Returned to Owner/Stray Intake
Transfer Out Non-Partner Rate	# Transferred to a Non-Partner/Total Intake
Transfer Out Partner Rate	# Transferred to a Partner/Total Intake
Transfer Total Out Rate	(# Transferred to a Non-Partner + # Transferred to a Partner)/Total Intake
Euthanasia Rate	# Euthanized/Total Intake (including Owner Requested Euthanasia)
RTF (Returned to Field) Rate	# Returned to Field/Stray Intake (specific to felines)
Other Live Release Rate	# Other Live Release/Total Intake (specific to canines)
Rate per 000 People	On the quarterly ASPCA Community Summary Report only: this rate is calculated by dividing the total count value by 1,000 people. Human population is shown on the Community Descriptors page of that report.

## Animal categories

Dogs	Canines over 5 months of age
Puppies	Canines 6 weeks up to and including 5 months of age
Canine neonates	Canines less than 6 weeks of age
Cats	Felines over 5 months of age
Kittens	Felines 6 weeks up to and including 5 months of age
Feline neonates	Felines less than 6 weeks of age

## Intake Terms

Total Intake	<p><u>Community/Partnership total intake</u>: sum of animals entering all partner agencies from non-partner sources (i.e., excludes number transferred between Community-reporting partners), minus # animals returned within 30 days of adoption.</p> <p><u>Partner agency total intake</u>: sum of animals entering shelter from all sources (including intake/transfers from Community-reporting partners) minus # animals returned within 30 days of adoption.</p> <p>Total Intake does not include any animals dead on arrival at the shelter (DOA). NOTE: also does not include any <del>animals returning to the shelter location from a foster home. These are location changes, not new intake.</del></p>
Transfer from partner	Animals transferred in from a "Community-reporting" partner

## Sub-categories (that must total 'Intake - Non-Partner sources' when summed)

Owner Surrender	Animals relinquished by the owner for any reason (including Owner Requested Euthanasia). Animals returned more than 30 days after adoption are included here.
Stray	Animals picked up in field or brought to shelter (by anyone) who have no known owner
Transfer from non-partner agencies	Animals transferred in from agencies that are not "Community-reporting" partners
Returns within 30 Days	Animals returned to shelter within 30 days of being adopted from that agency
Other	Animals born in care or from a source not listed above (including Court ordered impounds)

## Outcome Terms

**ASPCA: 2014 Animal Stats Data Definitions**

<b>Total Live Release</b>	Community/Partnership total live release: sum of (animals returned to owner, adopted (net of returns), Released to Field (felines), and transferred outside the partner organizations to agencies that guarantee adoption of the animals transferred to them) minus # animals returned within 30 days of adoption.  Partner agency total live release: sum of (animals returned to owner, adopted, transferred to any agency that guarantees placement) minus # animals returned within 30 days of adoption.
<b>Return to owner (RTO)</b>	Animals included in shelter Intake count (current or prior reporting period) who are successfully reunited with their owners (i.e. reclaimed from shelter)
<b>Adoption</b>	Final adoptions only. Does not include animals placed in foster care, on overnight 'trial' stays, or on hold at shelter prior to completion of adoption agreement.
<b>Return to Field</b>	Stray felines included in shelter Intake (current or a prior month), altered (or verified as altered) and returned to their capture location as free-roaming felines
<b>Other Live Release</b>	Canines included in shelter intake (current or prior month) with live placements that do not fit into the other live outcome categories (e.g., law enforcement, assistance dogs, etc.).
<b>Transfer Out to Partners</b>	Animals transferred out to other agencies or organizations that are "Community-reporting" partners
<b>Transfer Out to Non-Partners</b>	Animals transferred to agencies that guarantee placement and are not "Community-reporting" partners
<b>Euth – owner-request</b>	Narrow category that should only include animals that were brought to the agency specifically for a low cost euthanasia option. Animals relinquished for adoption that are deemed "unadoptable" by the partner agency should not be included here.
<b>Euth – all other [reasons]</b>	Animals euthanized for all reasons EXCEPT Owner Requested Euthanasia
<b>Died in care</b>	Animals in the agency's care that die (cause is NOT euthanasia) during their stay (in shelter or foster)
<b>Lost in Care</b>	Animals lost while in agency's care (e.g., escape from foster home, stolen)
<b>Targeted Spay/Neuter, TNR and RTF terms</b>	
<b>Targeted S/N [by animal type, other than TNR or RTF]</b>	S/N conducted on <u>owned</u> animals. Does not include shelter animals (or from partner shelters, non-partner shelters, rescue groups, etc) altered before adoption, or felines altered through a TNR or RTF program.
<b>TNR (Trap, Neuter, Return)</b>	S/N conducted on feral and/or free-roaming felines returned to a colony post-surgery. Does not include owned animals or felines who are RTF.
<b>RTF (Returned to Field)</b>	S/N conducted on felines taken into the shelter, counted as intake and then returned to their capture location as free-roaming felines.
<b>Total Intake</b>	Community/Partnership total intake: sum of animals entering all partner agencies from non-partner sources (i.e., excludes number transferred between Community-reporting partners), minus # animals returned within 30 days of adoption. Partner agency total intake: sum of animals entering shelter from all sources (including intake/transfers from Community-reporting partners) minus # animals returned within 30 days of adoption.
<b>Capacity related terms</b>	
<b>Number of permanent cages</b>	This number only includes cages that are permanent (and functional) in the facility. Do not include cage banks that are wheeled out to handle overflow, pop up crates or condos that are set up throughout the facility.
<b>Number of group housing units</b>	Some facilities have designed colony housing for cats, or dog suites designed to house more than one animal at a time. List the number of these units available. Note: "T" or Guillotine style dog kennels ARE NOT group housing units and should be counted as one kennel run.
<b>Dog shelter capacity (#)</b>	The number of permanent cages (each counted as 1) + (the number of group housing units X the number of animals each is designed to hold).
<b>Cat shelter capacity (#)</b>	The number of permanent cages (each counted as 1) + (the number of group housing units X the number of animals each is designed to hold).
<b># of active foster homes</b>	Number of foster homes with at least one animal in them on the last day of the month.
<b># of active satellite location kennels</b>	Number of offsite/satellite adoption locations (e.g., PetSmart) with at least one animal in them on the last day of the month - each cage space counts as one location. Does not include animals brought to an satellite adoption location for the day then returned to the shelter if not adopted that same day.
<b>End actual – in shelter</b>	The number of animals by age group (e.g., dogs, puppies, neonate canines, cats, kittens, neonate felines) in shelter (excluding those animals in foster care) on the last day of the reporting month.
<b>End actual – in foster</b>	Number of animals in foster care/homes on the last day of the reporting month, by age group.
<b>End Actual - in satellite locations</b>	Number of animals in satellite locations on the last day of the reporting month, by age group.
<b>End actual - total</b>	Reported total end in care (at shelter + in foster + in satellite locations) on last day of reporting period, by age group.

**ASPCA: 2014 Animal Stats Data Definitions**

<b>Calculated end count</b>	Calculated end in care number starting with last month's reported end in care number plus Intake, minus all outcomes (return to owner, adopted, returned to field, transferred, euthanized, died in care, lost in care)
<b>Difference</b>	The difference between the reported total end count and the calculated end count. Calculation: prior months' end count (as reported), plus current month intake, minus current month outcomes. Any "difference" number not equal to zero means there is an error in one or more of the intake/outcome numbers or an end count(s).
<b>Shelter dogs as % capacity</b>	The Total Canine adult equivalent in shelter divided by the dog shelter capacity #
<b>Shelter cats as % capacity</b>	The Total Feline adult equivalent in shelter divided by the feline shelter capacity #
<b>Foster as % capacity</b>	Total animals reported as "in foster" divided by # of active foster homes
<b>Satellite locations as % capacity</b>	Total animals reported as "in satellite locations" divided by # of active satellite location kennels
<b>Dog adult equivalent in shelter</b>	# dogs + (# puppies/2.5) For example: 2 dogs and 3 puppies would be equal to $2+(3/2.5) = 3.2$ dog adult equivalents.
<b>Cat adult equivalent in shelter</b>	# cats + (# kittens/2.5) For example: 2 cats and 3 kittens would be equal to $2+(3/2.5) = 3.2$ cat adult equivalents
<b>Total adult equivalent in foster</b>	2 dogs + 2 cats = 4 adults. 3 puppies + 3 kittens = 6 juveniles/2.5 = 2.4 adult equivalent. Total adult equivalent: $4 + 2.4 = 6.4$ adults equivalents in foster homes at month end.
<b>Total adult equivalent in satellite locations</b>	3 dogs + 2 cats = 4 adults. 3 puppies + 3 kittens = 6 juveniles/2.5 = 2.4 adult equivalent. Total adult equivalent: $4 + 2.4 = 6.4$ adults equivalents in satellite locations at month end.



Community Descriptors (1)	U.S.	Mayor's Alliance, NYC, NY	Hillsborough County, FL (Tampa)	Spokane County, WA	Travis County, TX (Austin)	Charleston County, SC	Oklahoma City, OK	Buncombe County, NC	Cleveland City, OH	Shelby County, AL	Sacramento County, CA	Miami-Dade County, FL	Jefferson County, KY (Louisville)	Bernalillo Cty, NM (ABQ)	Mecklenburg Cty, NC (Charlotte)
clockstart		2003	May-07	Aug-07	Jan-07	Apr-08	July-08	July-08	July-08	July-09	July-09	January-11	January-13	January-14	January-14
<b>Human Population 2010 (a)</b>															
Total population, in thousands (2010 Census, 2012 1-Year Estimates)	313,914	8,337	1,278	476	1,096	365	599	244	391	201	1,450	2,591	751	673	969
2018/2013 growth (cumulative, not annual rate)	4%	5%	6%	3%	7%	5%	5%	3%	2%	4%	4%	6%	3%	4%	6%
Percent of population that is urban	81%	100%	97%	86%	95%	89%	93%	76%	100%	77%	98%	100%	99%	96%	99%
Percent of population 18 and over in poverty	14%	19%	17%	15%	16%	15%	16%	16%	31%	7%	17%	18%	15%	16%	14%
Percent of population (civilian non-institutionalized) with no health	15%	14%	19%	13%	19%	18%	21%	18%	17%	10%	16%	29%	13%	16%	17%
Number of Households, in thousands	115,970	3,086	477	189	414	144	229	99	163	75	517	839	308	265	366
Median household income	\$ 51,371	\$ 50,895	\$ 46,515	\$ 47,624	\$ 57,368	\$ 48,593	\$ 43,352	\$ 43,294	\$ 24,257	\$ 65,728	\$ 52,667	\$ 41,400	\$ 45,869	\$ 46,190	\$ 55,295
White Population, in thousands	231,992	3,647	927	423	850	244	405	217	150	163	863	1,967	551	462	558
White Population in percent (c)	74%	44%	73%	89%	78%	67%	68%	89%	38%	81%	59%	76%	73%	69%	58%
Black or African American Population, in thousands	39,623	2,059	213	9	92	105	85	15	211	22	146	488	156	20	298
Black or African American Population in percent (c)	13%	25%	17%	2%	8%	29%	14%	6%	54%	11%	10%	19%	21%	3%	31%
Asian Population, in thousands	15,556	1,091	44	12	64	5	25	2	7	4	217	42	18	15	48
Asian Population in percent (c)	5%	13%	3%	2%	6%	1%	4%	1%	2%	2%	15%	2%	2%	2%	5%
Hispanic Population, in thousands	52,961	2,407	327	23	371	19	105	15	42	12	320	1,667	35	326	121
Hispanic Population in percent (c)	17%	29%	26%	5%	34%	5%	17%	6%	11%	6%	22%	64%	5%	48%	13%
Percent of population that speaks English less than "very well"	9%	23%	10%	3%	13%	3%	10%	N	5%	N	14%	34%	4%	8%	8%
Rental Households, in thousands	41,865	2,108	200	70	201	58	95	35	96	17	227	383	119	99	153
Rental Households as percent of total	36%	68%	42%	37%	49%	41%	41%	35%	59%	23%	44%	46%	39%	37%	42%
Percent of households with no vehicles	9%	57%	7%	8%	6%	8%	7%	7%	27%	3%	8%	12%	10%	7%	7%
<b>Animal Population (b)</b>															
Percent of households with dogs	36.5%	29.0%	35.7%	36.3%	44.0%	38.6%	43.2%	40.3%	36.6%	44.1%	32.8%	35.7%	45.9%	46.0%	40.3%
Average number of dogs per household	1.6	1.4	1.5	1.7	1.8	1.8	2.1	1.7	1.6	1.7	1.6	1.5	1.9	2.0	1.7
Estimated number of owned dogs, in thousands	67,726	1,253	256	117	328	100	207	68	95	56	271	449	268	244	251
Percentage of households with cats	30.4%	29.1%	27.3%	39.0%	28.3%	27.8%	32.6%	29.5%	33.3%	27.4%	28.3%	27.3%	36.8%	32.0%	29.5%
Average number of cats per household	2.1	1.9	2.1	1.8	2.2	2.1	2.2	2.0	2.4	2.5	1.9	2.1	2.1	2.2	2.0
Estimated number of owned cats, in thousands	74,035	1,706	274	133	258	84	164	58	130	51	278	481	238	186	216
Estimated number of owned animals, in thousands	141,761	2,959	529	249	586	184	371	126	225	108	549	930	506	430	467
Estimated number of free-roaming cats in thousands (d)	50,099	1,333	206	82	179	62	99	43	70	32	223	362	133	114	158
Estimated total number of animals, in thousands	191,860	4,292	735	331	765	246	470	169	296	140	772	1,292	639	544	625
Estimated number of owned animals in poverty, in thousands	19,705	547	89	37	93	28	61	20	70	8	94	171	78	69	65

**Notes:**

- 1 Sources: US Census Bureau American FactFinder, 2012 American Community Survey 1 Year Estimates, AVMA US Pet Ownership & Demographics Sourcebook, 2012 Edition (animal population)
- a. [Source: US Census Bureau, American FactFinder: http://factfinder2.census.gov/faces/nav/jsf/pages/searchresults.xhtml?ref=geo&refresh=t](http://factfinder2.census.gov/faces/nav/jsf/pages/searchresults.xhtml?ref=geo&refresh=t)
- b. Source: 2012 U.S. Pet Ownership & Demographics Sourcebook (per AVMA website, published every 5 years) (based on US Census Bureau: 2010 Current Population Survey), Tables 1-8 & 1-13.
- c. Ethnicities do not add to 100% because Hispanic can include White and Black. Also, white and black are people reporting one race only.
- d. 12% of households feed 3.6 cats each (Levy, J, Woods, J, Turick, S; & Etheridge, D. "Number of Free-roaming Cats in a College Community in the Southern United States and Characteristics of Community Residents who Feed Them." *J Am Vet Med Assoc* 2003; 223(2): 202-205)