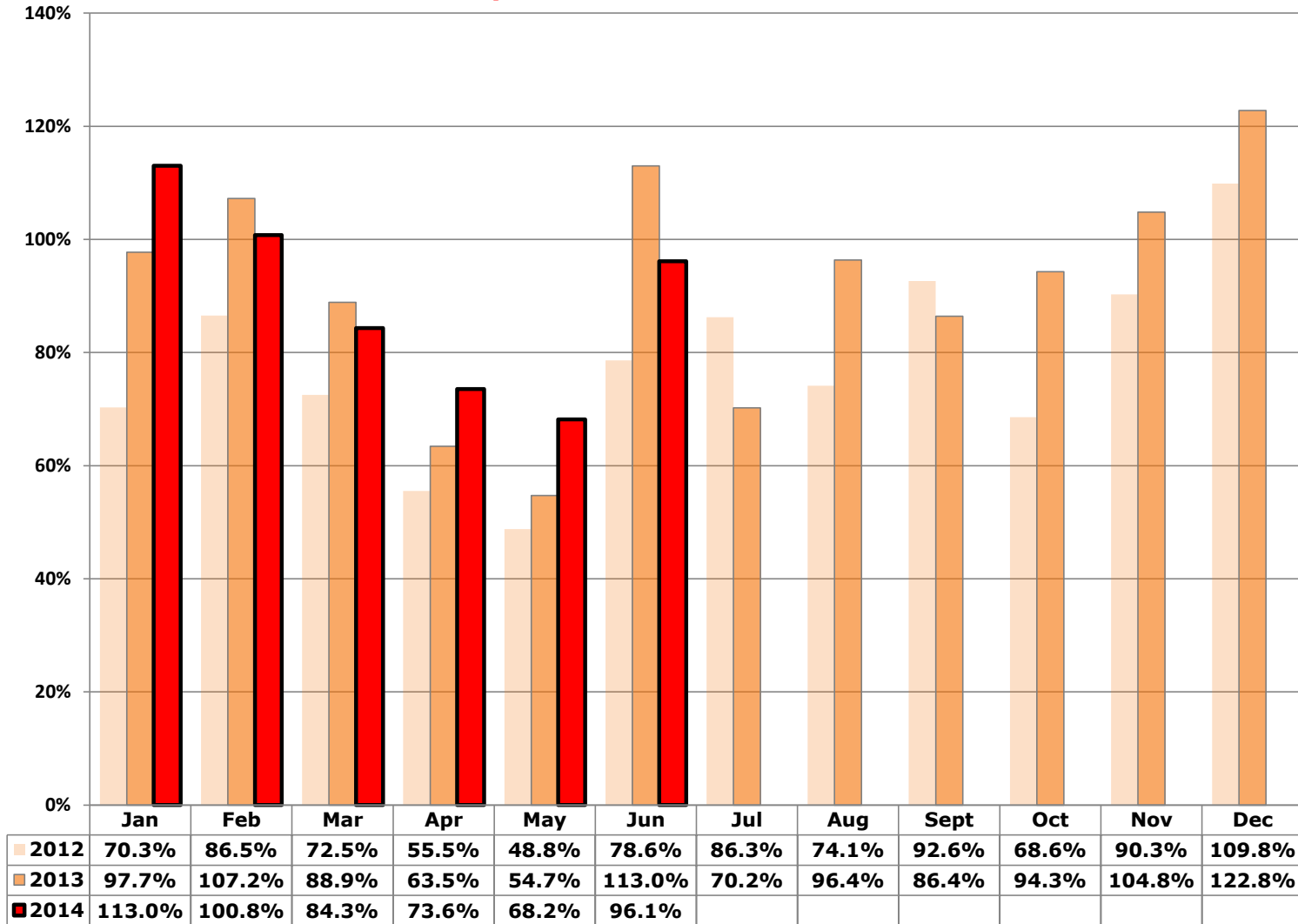


ALUMNI - Charleston SC partners - Live Release Rate -- Year over Year



ALUMNI Charleston SC: Dashboard Summary: 2014

Indicators - 2013	Rate/000 People	Dogs (adults)	Puppies & Neonates	Cats (adults)	Kittens & Neonates	Total YTD
Live Release Rate		92.5%	99.3%	95.6%	65.5%	87.2%
Total Live Release	12.00	1,416	669	1,362	847	4,294
Total Intake (net Returns)	13.76	1,530	674	1,425	1,293	4,922
Total Stray Intake	10.32	1,090	360	1,161	1,079	3,690
Total Returns	0.68	158	35	38	13	244
Total Returned to Owner (RTO)	1.45	363	13	137	4	517
Total Adopted (net Returns)	8.15	1,019	656	493	747	2,915
Total Returned to Field	2.05	n/a	n/a	693	40	733
Transferred out of Partnership for Placement	0.36	34	0	39	56	129
Total Animals Euthanized	0.89	153	18	57	90	318
Targeted Spay/Neuter Surgeries	10.89	1,394	335	1,772	393	3,894
<i>Other Rates:</i>						
RTO Rate (as % of Stray intake)		33%	4%	12%	0%	14%
Adoption Rate (as % of Total Intake)		67%	97%	35%	58%	59%
Returned to Field Rate (% of Feline Stray Intake)		n/a	n/a	60%	4%	33%
Transfer to Non-Partner Rate (% of Total Intake)		2%	0%	3%	4%	3%
Return Rate (% of Adoptions)		13%	5%	7%	2%	8%
Euthanasia Rate (as % of Total Intake)		10%	3%	4%	7%	6%

Targeted Spay/ Neuter and TNR	Q1	Q2	Q3	Q4	Total YTD
# targeted S/N conducted on cats (other than TNR)	495	452	0	0	947
# targeted S/N conducted on kittens (other than TNR)	140	201	0	0	341
# targeted S/N conducted on dogs	732	662	0	0	1,394
# targeted S/N conducted on puppies	184	151	0	0	335
# Cat(s) TNR	278	547	0	0	825
# Kitten(s) TNR	22	30	0	0	52
Total Spay/Neuter and TNR	1,851	2,043	0	0	3,894

ALUMNI Charleston SC: Dashboard Summary: 2014

Intake and Outcomes	All CANINES				
	Q1	Q2	Q3	Q4	Total
Live Release Rate	92.9%	96.6%	-	-	94.6%
# Total Live Release	1,119	966	0	0	2,085
# Total Intake (net returns)	1,204	1,000	0	0	2,204
Subcategory: # of Strays	755	695	0	0	1,450
Subcategory: # returned within 30 days of adoption	95	98	0	0	193
# Intakes processed through partner transfers	7	7	0	0	14
# Returned-to-Owner (RTO)	180	196	0	0	376
# Adoptions (net Returns)	919	756	0	0	1,675
# Adoptions processed	1,014	854	0	0	1,868
# transferred to partners	5	5	0	0	10
# transferred out of the partnership for Placement	20	14	0	0	34
# euthanized per owner request	1	2	0	0	3
# euthanized other than owner request	97	71	0	0	168
# died in care	8	4	0	0	12
# lost in care	0	1	0	0	1
<i>Other Rates:</i>					
RTO Rate (as % of Stray intake)	24%	28%	-	-	26%
Adoption Rate (as % of Total Intake)	76%	76%	-	-	76%
Transfer to Non-Partner Rate (% of Total Intake)	2%	1%	-	-	2%
Return Rate (% of Adoptions)	9%	11%	-	-	10%
Euthanasia Rate (as % of Total Intake)	8%	7%	-	-	8%

Intake and Outcomes	All FELINES				
	Q1	Q2	Q3	Q4	Total
Live Release Rate	106.7%	71.9%	-	-	81.3%
# Total Live Release	780	1,429	0	0	2,209
# Total Intake (net returns)	731	1,987	0	0	2,718
Subcategory: # of Strays	534	1,706	0	0	2,240
Subcategory: # returned within 30 days of adoption	23	28	0	0	51
# Intakes processed through partner transfers	2	15	0	0	17
# Returned-to-Owner (RTO)	45	96	0	0	141
# Adoptions (net Returns)	459	781	0	0	1,240
# Adoptions processed	482	809	0	0	1,291
# Returned to Field	243	490	0	0	733
# transferred to partners	3	1	0	0	4
# transferred out of the partnership for Placement	33	62	0	0	95
# euthanized per owner request	3	3	0	0	6
# euthanized other than owner request	25	116	0	0	141
# died in care	12	65	0	0	77
# lost in care	3	5	0	0	8
<i>Other Rates:</i>					
RTO Rate (as % of Stray intake)	8%	6%	-	-	6%
Adoption Rate (as % of Total Intake)	63%	39%	-	-	46%
Returned to Field Rate (% of Stray Intake)	46%	29%	-	-	33%
Transfer to Non-Partner Rate (% of Total Intake)	5%	3%	-	-	3%
Return Rate (% of Adoptions)	5%	3%	-	-	4%
Euthanasia Rate (as % of Total Intake)	4%	6%	-	-	5%

ALUMNI Charleston SC: Dashboard Summary: 2014

Intake and Outcomes	Dogs				Total
	Q1	Q2	Q3	Q4	
Live Release Rate	92.6%	92.5%	-	-	92.5%
# Total Intake (net returns)	812	718	0	0	1,530
Subcategory: # of Strays	564	526	0	0	1,090
Subcategory: # returned within 30 days of adoption	78	80	0	0	158
# Intakes processed through partner transfers	7	6	0	0	13
# Returned-to-Owner (RTO)	176	187	0	0	363
# Adoptions (net Returns)	556	463	0	0	1,019
# Adoptions processed	634	543	0	0	1,177
# transferred to partners	5	5	0	0	10
# transferred out of the partnership for Placement	20	14	0	0	34
# euthanized per owner request	1	2	0	0	3
# euthanized other than owner request	87	63	0	0	150
# died in care	2	2	0	0	4
# lost in care	0	0	0	0	0
<i>Other Rates:</i>					
RTO Rate (as % of Stray intake)	31%	36%	-	-	33%
Adoption Rate (as % of Total Intake)	68%	64%	-	-	67%
Transfer to Non-Partner Rate (% of Total Intake)	2%	2%	-	-	2%
Return Rate (% of Adoptions)	12%	15%	-	-	13%
Euthanasia Rate (as % of Total Intake)	11%	9%	-	-	10%

Intake and Outcomes	Puppies & Neonate Canines				Total
	Q1	Q2	Q3	Q4	
Live Release Rate	93.6%	107.1%	-	-	99.3%
# Total Intake (net returns)	392	282	0	0	674
Subcategory: # of Strays	191	169	0	0	360
Subcategory: # returned within 30 days of adoption	17	18	0	0	35
# Intakes processed through partner transfers	0	1	0	0	1
# Returned-to-Owner (RTO)	4	9	0	0	13
# Adoptions (net Returns)	363	293	0	0	656
# Adoptions processed	380	311	0	0	691
# transferred to partners	0	0	0	0	0
# transferred out of the partnership for Placement	0	0	0	0	0
# euthanized per owner request	0	0	0	0	0
# euthanized other than owner request	10	8	0	0	18
# died in care	6	2	0	0	8
# lost in care	0	1	0	0	1
<i>Other Rates:</i>					
RTO Rate (as % of Stray intake)	2%	5%	-	-	4%
Adoption Rate (as % of Total Intake)	93%	104%	-	-	97%
Transfer to Non-Partner Rate (% of Total Intake)	0%	0%	-	-	0%
Return Rate (% of Adoptions)	4%	6%	-	-	5%
Euthanasia Rate (as % of Total Intake)	3%	3%	-	-	3%

ALUMNI Charleston SC: Dashboard Summary: 2014

Intake and Outcomes	Cats				
	Q1	Q2	Q3	Q4	Total
Live Release Rate	96.3%	95.1%	-	-	95.6%
# Total Intake (net returns)	594	831	0	0	1,425
Subcategory: # of Strays	432	729	0	0	1,161
Subcategory: # returned within 30 days of adoption	20	18	0	0	38
# Intakes processed through partner transfers	2	7	0	0	9
# Returned-to-Owner (RTO)	45	92	0	0	137
# Adoptions (net Returns)	274	219	0	0	493
# Adoptions processed	294	237	0	0	531
# Returned to Field	228	465	0	0	693
# transferred to partners	3	1	0	0	4
# transferred out of the partnership for Placement	25	14	0	0	39
# euthanized per owner request	2	3	0	0	5
# euthanized other than owner request	21	31	0	0	52
# died in care	6	4	0	0	10
# lost in care	3	5	0	0	8
<i>Other Rates:</i>					
RTO Rate (as % of Stray intake)	10%	13%	-	-	12%
Adoption Rate (as % of Total Intake)	46%	26%	-	-	35%
Returned to Field Rate (% of Stray Intake)	53%	64%	-	-	60%
Transfer to Non-Partner Rate (% of Total Intake)	4%	2%	-	-	3%
Return Rate (% of Adoptions)	7%	8%	-	-	7%
Euthanasia Rate (as % of Total Intake)	4%	4%	-	-	4%

Intake and Outcomes	Kittens & Neonate Felines				
	Q1	Q2	Q3	Q4	Total
Live Release Rate	151.8%	55.3%	-	-	65.5%
# Total Intake (net returns)	137	1,156	0	0	1,293
Subcategory: # of Strays	102	977	0	0	1,079
Subcategory: # returned within 30 days of adoption	3	10	0	0	13
# Intakes processed through partner transfers	0	8	0	0	8
# Returned-to-Owner (RTO)	0	4	0	0	4
# Adoptions (net Returns)	185	562	0	0	747
# Adoptions processed	188	572	0	0	760
# Returned to Field	15	25	0	0	40
# transferred to partners	0	0	0	0	0
# transferred out of the partnership for Placement	8	48	0	0	56
# euthanized per owner request	1	0	0	0	1
# euthanized other than owner request	4	85	0	0	89
# died in care	6	61	0	0	67
# lost in care	0	0	0	0	0
<i>Other Rates:</i>					
RTO Rate (as % of Stray intake)	0%	0%	-	-	0%
Adoption Rate (as % of Total Intake)	135%	49%	-	-	58%
Returned to Field Rate (% of Stray Intake)	15%	3%	-	-	4%
Transfer to Non-Partner Rate (% of Total Intake)	6%	4%	-	-	4%
Return Rate (% of Adoptions)	2%	2%	-	-	2%
Euthanasia Rate (as % of Total Intake)	4%	7%	-	-	7%

ASPCA: 2013 Animal Stats Dashboard -- Definitions

Key Indicators

Live Release Rate	Rate calculation = Total Live Release count divided by Total Intake
Total Live Release	Community/Partnership total live release: sum of (animals returned to owner, adopted (net of returns), Released to Field (felines), or transferred outside the partner organizations to agencies that guarantee adoption of the animals transferred to them) minus animals returned within 30 days of adoption. Partner agency live release: sum of (animals returned to owner, adopted, transferred to any agency that guarantees placement) minus # animals returned within 30 days of adoption date from that agency.
Total Intake	Community/Partnership total intake: sum of animals entering all partner agencies from non-partner sources (i.e., excludes number transferred between Dashboard-reporting partners), minus animals returned within 30 days of adoption from one of the reporting partners. Partner agency total intake: sum of animals entering shelter from all sources (including intake/transfers from dashboard-reporting partners) minus animals returned within 30 days of adoption.
Euthanasia	The total number of animals in partner facility(s) that were euthanized for all reasons (including Owner Request).
Targeted Spay/Neuter	The total number of animals altered through no or low-cost spay/neuter services or a TNR program. Targeted includes: <ul style="list-style-type: none"> • Low-income by actual level or entitlement qualification OR • Low-income / high-risk by location of residence OR • Unlikely to have been altered in the absence of low-cost program OR • Impounded one or more times as a stray OR • Feral or free-roaming animal Note: It does not include shelter animals (partner shelters, non-partner shelters, rescue groups, etc) altered before adoption.

Other "Rates" (appear on various reports and used to track trend of Outcomes over time)

Adoption Rate	# Adoptions (net returns within 30 days)/Total Intake
RTO Rate	# Return to Owner/Stray Intake
Returned to Field Rate	# Returned to Field/Total Feline Stray Intake
Transferred to Non-Partners Rate	# Transferred to a Non-Partner/Total Intake
Returns 30 rate	# Returns in 30 days/# Adoptions Processed
Euthanasia rate	# Euthanized/Total Intake
Rate per 000 (as seen only on the quarterly Dashboard Summary report)	On the quarterly Dashboard Summary Report only: this rate is calculated by dividing the total count value by population. The result is the rate per thousand people. Human population is shown on the Community Descriptors page of that report.

Animal categories

Dogs	Canines over 5 months of age.
Puppies	Canines 6 weeks up to and including 5 months of age.
Canine neonates	Canines less than 6 weeks old.
Cats	Felines over 5 months of age.
Kittens	Felines 6 weeks up to and including 5 months of age.
Feline neonates	Felines less than 6 weeks old.

ASPCA: 2013 Animal Stats Dashboard -- Definitions

Intake Terms

Intake – all sources	Grand total of all live animal intake from all sources (categories below). Does not include any animals dead on arrival at the shelter (DOA). NOTE: does not include any animals returning to the shelter location from a foster home. For the Dashboard, these are location changes, not new intake.
-----------------------------	---

Sub-categories (that must total 'all sources' when summed)

Owner Surrender	Animals relinquished by owner for any reason (including Request for Euthanasia)
Stray	Animals picked up in field or brought to shelter (by anyone) who have no known owner.
Transfer from non-partner agencies	Animals transferred from agencies that are not "Dashboard-reporting" partners.
Transfer from partner	Animals transferred from a "Dashboard-reporting" partner.
Returns within 30 Days	Animals returned to shelter within 30 days of being adopted from that agency.
Other	Animals born in care or from a source not listed above (including Court ordered impounds).

Outcome Terms

Return to owner (RTO)	Animals included in shelter Intake count (current or prior reporting period) who are successfully reunited with their owners (i.e. reclaimed from shelter).
Adoption	Final adoptions only. Does not include animals placed in foster care, on overnight 'trial' stays, or on hold at shelter prior to completion of adoption agreement.
Return to Field	Stray felines included in shelter Intake (current or a prior month), altered and returned to stray capture location as free-roaming felines.
Transfer - partners	Animals sent to other agencies or organizations that are "Dashboard-reporting" partners.
Transfer – non-partners	Animals transferred to agencies that guarantee placement and are not "Dashboard-reporting" partners .
Euth – owner-requested	Narrow category that should only include animals that were brought to the facility specifically for a low cost euthanasia option. Animals relinquished for adoption that are deemed "unadoptable" by the partner agency should not be included here.
Euth – all other [reasons]	Animals euthanized for all reasons EXCEPT owner-requested.
Died in care	Animals in the agency's care that die (cause is NOT euthanasia) during their stay (in shelter or foster).
Lost in Care	Animals lost while in agency's care (e.g., escape from foster home).

ASPCA: 2013 Animal Stats Dashboard -- Definitions

Targeted Spay/Neuter terms	
Targeted S/N [by animal type, other than TNR]	Only S/N conducted on <u>owned</u> animals. Does not include shelter animals (or from partner shelters, non-partner shelters, rescue groups, etc) altered before adoption, or cats or kittens altered through a TNR program.
TNR (Trap, Neuter, Release)	Surgery count for stray, feral and/or free-roaming felines returned to a colony or other source location post-surgery. Does not include owned animals or shelter cats or kittens who will not be returned to a colony. It DOES include felines taken into the Shelter, counted as intake and then altered and Released to the Field.
Capacity related terms	
Number of Permanent cages	This number only includes cages that are permanent in the facility. Do not include cage banks that are wheeled out to handle overflow or condos that are set up throughout the facility.
Number of Group Housing Units	Some facilities have designed colony housing for cats, or dog suites designed to house more than one animal at a time. List the number of these units available, and the number of animals each were designed to hold. Note: "T" or Guillotine style dog kennels should be counted as one kennel run.
Dog shelter capacity (#)	The number of permanent cages for dogs (each counted as Capacity =1).
Cat shelter capacity (#)	The number of permanent cages (each counted as 1) + (the number of group housing units X the number of animals each is designed to hold).
# of active foster homes	Number of foster homes with at least one animal in them on the last day of the month. Offsite adoption locations such as PetSmart should also be counted as foster homes - each cage space counts as one foster home.
End actual – in shelter	The number of animals by report group (e.g., dogs, puppies, cats, kittens) in shelter (excluding those animals in foster care) on the last day of the reporting month.
End actual – in foster	Number of animals in foster care/homes on the last day of the reporting month.
End actual - total	Reported total end in care (at shelter plus in foster) on last day of reporting period.
Calculated end count	Calculated end in care number starting with last month's reported end in care number plus Intake, minus all final outcome status animals (return to owner, adopted, released to field, transferred, euthanized, died in care, lost in care)
Difference	The difference between the reported total end count and the calculated end count. Calculation: prior months' end count (as reported), plus current month intake, minus current month outcomes. Any "difference" number not equal to zero means there is an error in one or more of the intake/outcome numbers or an end count(s).
Shelter dogs as % capacity	The Total Dog adult equivalent in shelter divided by the dog shelter capacity #
Shelter cats as % capacity	The Total Feline adult equivalent in shelter divided by the feline shelter capacity#
Foster as % capacity	Total animals reported as "in foster" divided by # of active foster homes
Dog adult equivalent in shelter	# dogs + (# puppies/2.5) For example: 2 dogs and 3 puppies would be equal to $2+(3/2.5) = 3.2$ dog adult equivalents.
Cat adult equivalent in shelter	# cats + (# kittens/2.5) For example: 2 cats and 3 kittens would be equal to $2+(3/2.5) = 3.2$ cat adult equivalents
Total adult equivalent in foster	2 dogs + 2 cats = 4 adults. 3 puppies + 3 kittens = 6 juveniles/2.5 = 2.4 adult equivalent. Total adult equivalent: $4 + 2.4 = 6.4$ adults equivalents in foster homes at month end.

Community Descriptors (1)	U.S.	Mayor's Alliance, NYC, NY	Hillsborough County, FL (Tampa)	Spokane County, WA	Travis County, TX (Austin)	Charleston County, SC	Oklahoma City, OK	Buncombe County, NC	Cleveland City, OH	Shelby County, AL	Sacramento County, CA	Miami-Dade County, FL	Jefferson County, KY (Louisville)
clockstart		2003	May-07	Aug-07	Jan-07	Apr-08	July-08	July-08	July-08	July-09	July-09	January-11	January-13
Human Population (2010 Census, 2011 1-Year Estimates) (a)													
Total population in thousands (2010 Census, 2011 1-Year Estimates)	311,592	8,245	1,268	474	1,063	358	592	241	394	198	1,436	2,555	747
2017/2012 growth (cumulative, not annual rate)	4%	2%	9%	4%	11%	6%	6%	6%	-4%	10%	5%	6%	3%
Percent of population that is urban	78%	100%	90%	84%	89%	83%	91%	70%	100%	59%	94%	99%	97%
Percent of population 18 and over in poverty	14%	19%	16%	14%	16%	18%	17%	16%	29%	6%	15%	19%	14%
Percent of population (civilian non-institutionalized) with no health insurance	15%	15%	19%	13%	20%	16%	21%	17%	18%	10%	14%	31%	14%
Number of households in thousands (occupied housing units)	114,992	3,023	464	187	411	141	225	102	171	75	511	818	298
Median household income	\$ 50,502	\$ 49,461	\$ 46,761	\$ 49,078	\$ 53,036	\$ 50,510	\$ 42,995	\$ 41,422	\$ 25,371	\$ 65,815	\$ 52,314	\$ 40,552	\$ 45,383
White Pop	230,839	3,618	911	422	769	238	400	214	163	165	862	1,919	546
White population in percent (c)	74%	44%	72%	89%	72%	67%	68%	89%	41%	83%	60%	75%	73%
Black or AA Pop	39,190	2,054	214	10	90	107	87	17	203	23	143	486	153
Black or African American population in percent (c)	13%	25%	17%	2%	8%	30%	15%	7%	52%	12%	10%	19%	20%
Asian Pop	15,020	1,052	43	10	59	5	24	3	6	4	206	39	17
Asian population in percent (c)	5%	13%	3%	2%	6%	1%	4%	1%	1%	2%	14%	2%	2%
Hispanic Pop	51,940	2,373	318	22	360	19	103	15	38	12	316	1648	34
Hispanic population in percent (c)	17%	29%	25%	5%	34%	5%	17%	6%	10%	6%	22%	65%	5%
Percent of population that speaks English less than "very well"	9%	23%	10%	3%	14%	2%	10%	N	5%	N	14%	35%	4%
Rental HHs	40,727	2,077	186	67	205	53	94	39	94	15	224	359	108
Rental households as percent of total	35%	69%	40%	36%	50%	38%	42%	39%	55%	20%	44%	44%	36%
Percent of households with no vehicles	9%	56%	7%	8%	6%	10%	7%	9%	25%	3%	8%	12%	10%
Animal Population (b)													
Percent of households with dogs	36.5%	29.0%	35.7%	36.3%	44.0%	38.6%	43.2%	40.3%	36.6%	44.1%	32.8%	35.7%	45.9%
Average number of dogs per household	1.6	1.4	1.5	1.7	1.8	1.8	2.1	1.7	1.6	1.7	1.6	1.5	1.9
Estimated number of owned dogs, in thousands	67,155	1,227	249	116	325	98	204	70	100	56	268	438	260
Percentage of households with cats	30.4%	29.1%	27.3%	39.0%	28.3%	27.8%	32.6%	29.5%	33.3%	27.4%	28.3%	27.3%	36.8%
Average number of cats per household	2.1	1.9	2.1	1.8	2.2	2.1	2.2	2.0	2.4	2.5	1.9	2.1	2.1
Estimated number of owned cats	73,411	1,672	266	132	256	82	161	60	137	51	275	469	230
Estimated number of owned animals, in thousands	140,566	2,899	515	247	581	181	366	129	237	107	542	907	491
Estimated number of free-roaming cats in thousands (d)	49,676	1,306	201	81	177	61	97	44	74	32	221	354	129
Estimated total number of animals, in thousands	190,242	4,205	716	328	758	242	463	173	311	139	763	1,261	619
Estimated number of owned animals in poverty, in thousands	19,539	536	82	35	95	32	61	21	68	7	82	171	69

Notes:

1 Sources: US Census Bureau American FactFinder, 2011 American Community Survey 1 Year Estimates, AVMA US Pet Ownership & Demographics Sourcebook, 2012 Edition (animal population)

a. [Source: US Census Bureau, American FactFinder: http://factfinder2.census.gov/faces/nav/jsf/pages/searchresults.xhtml?ref=geo&refresh=t](http://factfinder2.census.gov/faces/nav/jsf/pages/searchresults.xhtml?ref=geo&refresh=t)

b. Source: 2012 U.S. Pet Ownership & Demographics Sourcebook (per AVMA website, published every 5 years) (based on US Census Bureau: 2010 Current Population Survey), Tables 1-8 & 1-13.

c. Ethnicities do not add to 100% because Hispanic can include White and Black. Also, white and black are people reporting one race only.

d. 12% of households feed 3.6 cats each (Levy, J, Woods, J, Turick, S; & Etheridge, D. "Number of Free-roaming Cats in a College Community in the Southern United States and Characteristics of Community Residents who Feed Them." *J Am Vet Med Assoc* 2003; 223(2): 202-205)