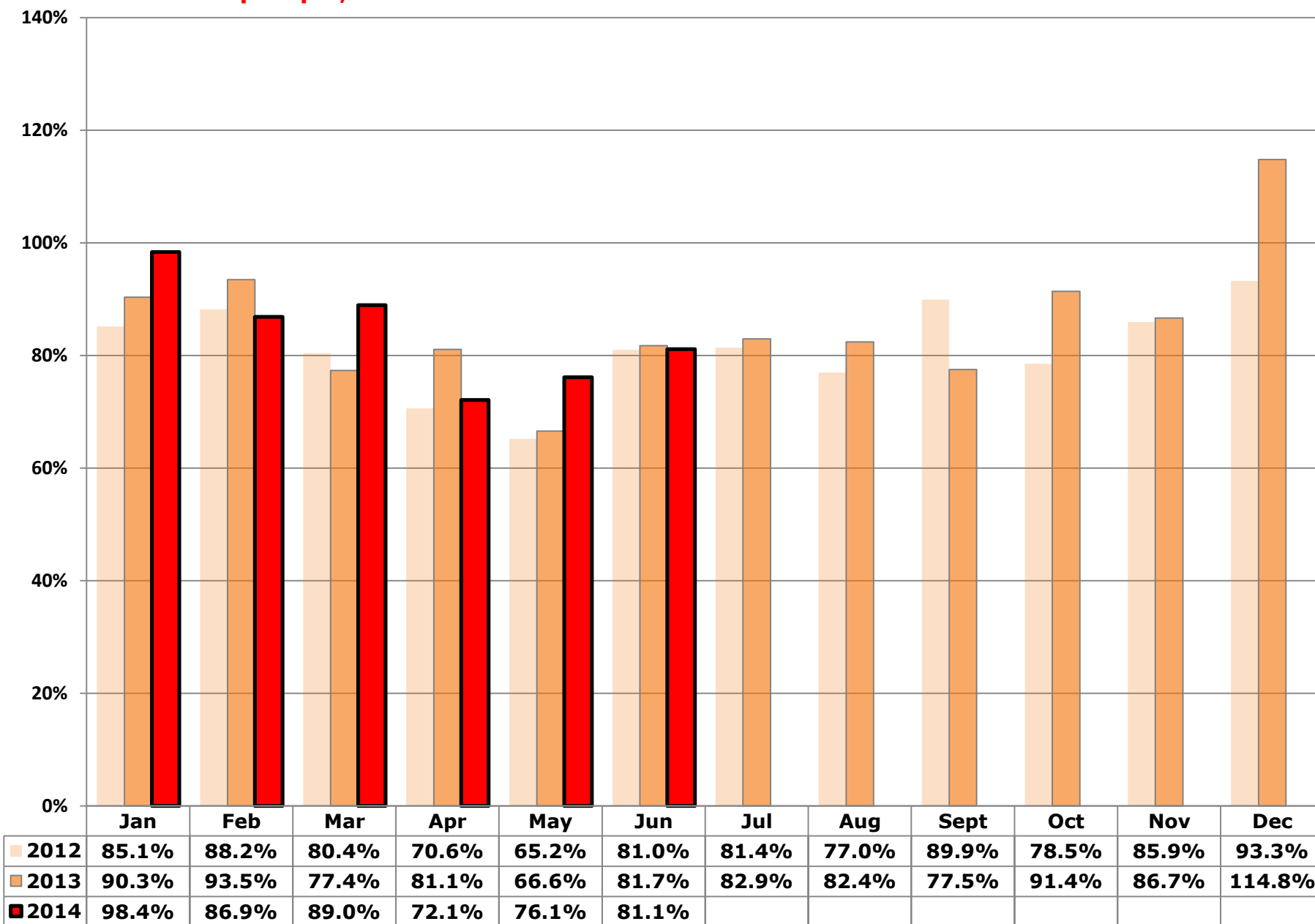


Albuquerque, NM Partners - Live Release Rate -- Year over Year



Albuquerque, NM Partners: Dashboard Summary: 2014

Indicators - 2014	Rate/000 People	Dogs (adults)	Puppies & Neonates	Cats (adults)	Kittens & Neonates	Total YTD
Live Release Rate		83.4%	87.3%	94.1%	62.5%	83.1%
Total Live Release	12.21	4,520	1,020	1,829	854	8,223
Total Intake (net Returns)	14.70	5,419	1,169	1,943	1,366	9,897
Total Stray Intake	9.22	3,482	609	1,142	973	6,206
Total Returns	0.80	330	56	116	35	537
Total Returned to Owner (RTO)	2.53	1,487	41	170	6	1,704
Total Adopted (net Returns)	8.28	2,730	964	1,172	712	5,578
Total Returned to Field	0.00	n/a	n/a	0	0	0
Transferred out of Partnership for Placement	1.40	303	15	487	136	941
Total Animals Euthanized	1.63	751	99	178	68	1,096
Targeted Spay/Neuter Surgeries	1.16	420	0	364	0	784
<i>Other Rates:</i>						
RTO Rate (as % of Stray intake)		43%	7%	15%	1%	27%
Adoption Rate (as % of Total Intake)		50%	82%	60%	52%	56%
Returned to Field Rate (% of Feline Stray Intake)		n/a	n/a	0%	0%	0%
Transfer to Non-Partner Rate (% of Total Intake)		6%	1%	25%	10%	10%
Return Rate (% of Adoptions)		11%	5%	9%	5%	9%
Euthanasia Rate (as % of Total Intake)		14%	8%	9%	5%	11%

Targeted Spay/ Neuter and TNR	Q1	Q2	Q3	Q4	Total YTD
# targeted S/N conducted on cats (other than TNR)	112	56	0	0	168
# targeted S/N conducted on kittens (other than TNR)	0	0	0	0	0
# targeted S/N conducted on dogs	241	179	0	0	420
# targeted S/N conducted on puppies	0	0	0	0	0
# Cat(s) TNR	119	77	0	0	196
# Kitten(s) TNR	0	0	0	0	0
Total Spay/Neuter and TNR	472	312	0	0	784

Albuquerque, NM Partners: Dashboard Summary: 2014

Intake and Outcomes	All CANINES				
	Q1	Q2	Q3	Q4	Total
Live Release Rate	84.8%	83.4%	-	-	84.1%
# Total Live Release	2,733	2,807	0	0	5,540
# Total Intake (net returns)	3,224	3,364	0	0	6,588
Subcategory: # of Strays	1,934	2,157	0	0	4,091
Subcategory: # returned within 30 days of adoption	200	186	0	0	386
# Intakes processed through partner transfers	56	51	0	0	107
# Returned-to-Owner (RTO)	740	788	0	0	1,528
# Adoptions (net Returns)	1,878	1,816	0	0	3,694
# Adoptions processed	2,078	2,002	0	0	4,080
# transferred to partners	57	53	0	0	110
# transferred out of the partnership for Placement	115	203	0	0	318
# euthanized per owner request	0	0	0	0	0
# euthanized other than owner request	395	455	0	0	850
# died in care	20	20	0	0	40
# lost in care	3	4	0	0	7
<i>Other Rates:</i>					
RTO Rate (as % of Stray intake)	38%	37%	-	-	37%
Adoption Rate (as % of Total Intake)	58%	54%	-	-	56%
Transfer to Non-Partner Rate (% of Total Intake)	4%	6%	-	-	5%
Return Rate (% of Adoptions)	10%	9%	-	-	9%
Euthanasia Rate (as % of Total Intake)	12%	14%	-	-	13%

Intake and Outcomes	All FELINES				
	Q1	Q2	Q3	Q4	Total
Live Release Rate	109.8%	65.9%	-	-	81.1%
# Total Live Release	1,255	1,428	0	0	2,683
# Total Intake (net returns)	1,143	2,166	0	0	3,309
Subcategory: # of Strays	628	1,487	0	0	2,115
Subcategory: # returned within 30 days of adoption	84	67	0	0	151
# Intakes processed through partner transfers	43	81	0	0	124
# Returned-to-Owner (RTO)	74	102	0	0	176
# Adoptions (net Returns)	884	1,000	0	0	1,884
# Adoptions processed	968	1,067	0	0	2,035
# Returned to Field	0	0	0	0	0
# transferred to partners	48	91	0	0	139
# transferred out of the partnership for Placement	297	326	0	0	623
# euthanized per owner request	0	0	0	0	0
# euthanized other than owner request	106	140	0	0	246
# died in care	7	48	0	0	55
# lost in care	2	8	0	0	10
<i>Other Rates:</i>					
RTO Rate (as % of Stray intake)	12%	7%	-	-	8%
Adoption Rate (as % of Total Intake)	77%	46%	-	-	57%
Returned to Field Rate (% of Feline Stray Intake)	0%	0%	-	-	0%
Transfer to Non-Partner Rate (% of Total Intake)	26%	15%	-	-	19%
Return Rate (% of Adoptions)	9%	6%	-	-	7%
Euthanasia Rate (as % of Total Intake)	9%	6%	-	-	7%

Albuquerque, NM Partners: Dashboard Summary: 2014

Intake and Outcomes	Dogs				
	Q1	Q2	Q3	Q4	Total
Live Release Rate	83.6%	83.2%	-	-	83.4%
# Total Intake (net returns)	2,659	2,760	0	0	5,419
Subcategory: # of Strays	1,684	1,798	0	0	3,482
Subcategory: # returned within 30 days of adoption	175	155	0	0	330
# Intakes processed through partner transfers	53	50	0	0	103
# Returned-to-Owner (RTO)	724	763	0	0	1,487
# Adoptions (net Returns)	1,390	1,340	0	0	2,730
# Adoptions processed	1,565	1,495	0	0	3,060
# transferred to partners	54	49	0	0	103
# transferred out of the partnership for Placement	110	193	0	0	303
# euthanized per owner request	0	0	0	0	0
# euthanized other than owner request	362	389	0	0	751
# died in care	14	17	0	0	31
# lost in care	3	4	0	0	7
<i>Other Rates:</i>					
RTO Rate (as % of Stray intake)	43%	42%	-	-	43%
Adoption Rate (as % of Total Intake)	52%	49%	-	-	50%
Transfer to Non-Partner Rate (% of Total Intake)	4%	7%	-	-	6%
Return Rate (% of Adoptions)	11%	10%	-	-	11%
Euthanasia Rate (as % of Total Intake)	14%	14%	-	-	14%

Intake and Outcomes	Puppies & Neonate Canines				
	Q1	Q2	Q3	Q4	Total
Live Release Rate	90.1%	84.6%	-	-	87.3%
# Total Intake (net returns)	565	604	0	0	1,169
Subcategory: # of Strays	250	359	0	0	609
Subcategory: # returned within 30 days of adoption	25	31	0	0	56
# Intakes processed through partner transfers	3	1	0	0	4
# Returned-to-Owner (RTO)	16	25	0	0	41
# Adoptions (net Returns)	488	476	0	0	964
# Adoptions processed	513	507	0	0	1,020
# transferred to partners	3	4	0	0	7
# transferred out of the partnership for Placement	5	10	0	0	15
# euthanized per owner request	0	0	0	0	0
# euthanized other than owner request	33	66	0	0	99
# died in care	6	3	0	0	9
# lost in care	0	0	0	0	0
<i>Other Rates:</i>					
RTO Rate (as % of Stray intake)	6%	7%	-	-	7%
Adoption Rate (as % of Total Intake)	86%	79%	-	-	82%
Transfer to Non-Partner Rate (% of Total Intake)	1%	2%	-	-	1%
Return Rate (% of Adoptions)	5%	6%	-	-	5%
Euthanasia Rate (as % of Total Intake)	6%	11%	-	-	8%

Albuquerque, NM Partners: Dashboard Summary: 2014

Intake and Outcomes	Cats				
	Q1	Q2	Q3	Q4	Total
Live Release Rate	110.6%	78.5%	-	-	94.1%
# Total Intake (net returns)	947	996	0	0	1,943
Subcategory: # of Strays	517	625	0	0	1,142
Subcategory: # returned within 30 days of adoption	69	47	0	0	116
# Intakes processed through partner transfers	39	23	0	0	62
# Returned-to-Owner (RTO)	73	97	0	0	170
# Adoptions (net Returns)	694	478	0	0	1,172
# Adoptions processed	763	525	0	0	1,288
# Returned to Field	0	0	0	0	0
# transferred to partners	45	23	0	0	68
# transferred out of the partnership for Placement	280	207	0	0	487
# euthanized per owner request	0	0	0	0	0
# euthanized other than owner request	94	84	0	0	178
# died in care	2	5	0	0	7
# lost in care	2	4	0	0	6
<i>Other Rates:</i>					
RTO Rate (as % of Stray intake)	14%	16%	-	-	15%
Adoption Rate (as % of Total Intake)	73%	48%	-	-	60%
Returned to Field Rate (% of Feline Stray Intake)	0%	0%	-	-	0%
Transfer to Non-Partner Rate (% of Total Intake)	30%	21%	-	-	25%
Return Rate (% of Adoptions)	9%	9%	-	-	9%
Euthanasia Rate (as % of Total Intake)	10%	8%	-	-	9%

Intake and Outcomes	Kittens & Neonate Felines				
	Q1	Q2	Q3	Q4	Total
Live Release Rate	106.1%	55.2%	-	-	62.5%
# Total Intake (net returns)	196	1,170	0	0	1,366
Subcategory: # of Strays	111	862	0	0	973
Subcategory: # returned within 30 days of adoption	15	20	0	0	35
# Intakes processed through partner transfers	4	58	0	0	62
# Returned-to-Owner (RTO)	1	5	0	0	6
# Adoptions (net Returns)	190	522	0	0	712
# Adoptions processed	205	542	0	0	747
# Returned to Field	0	0	0	0	0
# transferred to partners	3	68	0	0	71
# transferred out of the partnership for Placement	17	119	0	0	136
# euthanized per owner request	0	0	0	0	0
# euthanized other than owner request	12	56	0	0	68
# died in care	5	43	0	0	48
# lost in care	0	4	0	0	4
<i>Other Rates:</i>					
RTO Rate (as % of Stray intake)	1%	1%	-	-	1%
Adoption Rate (as % of Total Intake)	97%	45%	-	-	52%
Returned to Field Rate (% of Feline Stray Intake)	0%	0%	-	-	0%
Transfer to Non-Partner Rate (% of Total Intake)	9%	10%	-	-	10%
Return Rate (% of Adoptions)	7%	4%	-	-	5%
Euthanasia Rate (as % of Total Intake)	6%	5%	-	-	5%

ASPCA: 2013 Animal Stats Dashboard -- Definitions
Key Indicators

Live Release Rate	Rate calculation = Total Live Release count divided by Total Intake
Total Live Release	Community/Partnership total live release: sum of (animals returned to owner, adopted (net of returns), Released to Field (felines), or transferred outside the partner organizations to agencies that guarantee adoption of the animals transferred to them) minus animals returned within 30 days of adoption. Partner agency live release: sum of (animals returned to owner, adopted, transferred to any agency that guarantees placement) minus # animals returned within 30 days of adoption date from that agency.
Total Intake	Community/Partnership total intake: sum of animals entering all partner agencies from non-partner sources (i.e., excludes number transferred between Dashboard-reporting partners), minus animals returned within 30 days of adoption from one of the reporting partners. Partner agency total intake: sum of animals entering shelter from all sources (including intake/transfers from dashboard-reporting partners) minus animals returned within 30 days of adoption.
Euthanasia	The total number of animals in partner facility(s) that were euthanized for all reasons (including Owner Request).
Targeted Spay/Neuter	The total number of animals altered through no or low-cost spay/neuter services or a TNR program. Targeted includes: <ul style="list-style-type: none"> • Low-income by actual level or entitlement qualification OR • Low-income / high-risk by location of residence OR • Unlikely to have been altered in the absence of low-cost program OR • Impounded one or more times as a stray OR • Feral or free-roaming animal Note: It does not include shelter animals (partner shelters, non-partner shelters, rescue groups, etc) altered before adoption.

Other "Rates" (appear on various reports and used to track trend of Outcomes over time)

Adoption Rate	# Adoptions (net returns within 30 days)/Total Intake
RTO Rate	# Return to Owner/Stray Intake
Returned to Field Rate	# Returned to Field/Total Feline Stray Intake
Transferred to Non-Partners Rate	# Transferred to a Non-Partner/Total Intake
Returns 30 rate	# Returns in 30 days/# Adoptions Processed
Euthanasia rate	# Euthanized/Total Intake
Rate per 000 (as seen only on the quarterly Dashboard Summary report)	On the quarterly Dashboard Summary Report only: this rate is calculated by dividing the total count value by population. The result is the rate per thousand people. Human population is shown on the Community Descriptors page of that report.

Animal categories

Dogs	Canines over 5 months of age.
Puppies	Canines 6 weeks up to and including 5 months of age.
Canine neonates	Canines less than 6 weeks old.
Cats	Felines over 5 months of age.
Kittens	Felines 6 weeks up to and including 5 months of age.
Feline neonates	Felines less than 6 weeks old.

Intake Terms

Intake – all sources	Grand total of all live animal intake from all sources (categories below). Does not include any animals dead on arrival at the shelter (DOA). NOTE: does not include any animals returning to the shelter location from a foster home. For the Dashboard, these are location changes, not new intake.
-----------------------------	---

Sub-categories (that must total 'all sources' when summed)

Owner Surrender	Animals relinquished by owner for any reason (including Request for Euthanasia)
Stray	Animals picked up in field or brought to shelter (by anyone) who have no known owner.
Transfer from non-partner agencies	Animals transferred from agencies that are not "Dashboard-reporting" partners.
Transfer from partner	Animals transferred from a "Dashboard-reporting" partner.
Returns within 30 Days	Animals returned to shelter within 30 days of being adopted from that agency.
Other	Animals born in care or from a source not listed above (including Court ordered impounds).

ASPCA: 2013 Animal Stats Dashboard -- Definitions
Outcome Terms

Return to owner (RTO)	Animals included in shelter Intake count (current or prior reporting period) who are successfully reunited with their owners (i.e. reclaimed from shelter).
Adoption	Final adoptions only. Does not include animals placed in foster care, on overnight 'trial' stays, or on hold at shelter prior to completion of adoption agreement.
Return to Field	Stray felines included in shelter Intake (current or a prior month), altered and returned to stray capture location as free-roaming felines.
Transfer - partners	Animals sent to other agencies or organizations that are "Dashboard-reporting" partners.
Transfer – non-partners	Animals transferred to agencies that guarantee placement and are not "Dashboard-reporting" partners .
Euth – owner-requested	Narrow category that should only include animals that were brought to the facility specifically for a low cost euthanasia option. Animals relinquished for adoption that are deemed "unadoptable" by the partner agency should not be included here.
Euth – all other [reasons]	Animals euthanized for all reasons EXCEPT owner-requested.
Died in care	Animals in the agency's care that die (cause is NOT euthanasia) during their stay (in shelter or foster).
Lost in Care	Animals lost while in agency's care (e.g., escape from foster home).

Targeted Spay/Neuter terms

Targeted S/N [by animal type, other than TNR]	Only S/N conducted on <u>owned</u> animals. Does not include shelter animals (or from partner shelters, non-partner shelters, rescue groups, etc) altered before adoption, or cats or kittens altered through a TNR program.
TNR (Trap, Neuter, Release)	Surgery count for stray, feral and/or free-roaming felines returned to a colony or other source location post-surgery. Does not include owned animals or shelter cats or kittens who will not be returned to a colony. It DOES include felines taken into the Shelter, counted as intake and then altered and Released to the Field.

Capacity related terms

Number of Permanent cages	This number only includes cages that are permanent in the facility. Do not include cage banks that are wheeled out to handle overflow or condos that are set up throughout the facility.
Number of Group Housing Units	Some facilities have designed colony housing for cats, or dog suites designed to house more than one animal at a time. List the number of these units available, and the number of animals each were designed to hold. Note: "T" or Guillotine style dog kennels should be counted as one kennel run.
Dog shelter capacity (#)	The number of permanent cages for dogs (each counted as Capacity =1).
Cat shelter capacity (#)	The number of permanent cages (each counted as 1) + (the number of group housing units X the number of animals each is designed to hold).
# of active foster homes	Number of foster homes with at least one animal in them on the last day of the month. Offsite adoption locations such as PetSmart should also be counted as foster homes - each cage space counts as one foster home.
End actual – in shelter	The number of animals by report group (e.g., dogs, puppies, cats, kittens) in shelter (excluding those animals in foster care) on the last day of the reporting month.
End actual – in foster	Number of animals in foster care/homes on the last day of the reporting month.
End actual - total	Reported total end in care (at shelter plus in foster) on last day of reporting period.
Calculated end count	Calculated end in care number starting with last month's reported end in care number plus Intake, minus all final outcome status animals (return to owner, adopted, released to field, transferred, euthanized, died in care, lost in care)
Difference	The difference between the reported total end count and the calculated end count. Calculation: prior months' end count (as reported), plus current month intake, minus current month outcomes. Any "difference" number not equal to zero means there is an error in one or more of the intake/outcome numbers or an end count(s).
Shelter dogs as % capacity	The Total Dog adult equivalent in shelter divided by the dog shelter capacity #
Shelter cats as % capacity	The Total Feline adult equivalent in shelter divided by the feline shelter capacity#
Foster as % capacity	Total animals reported as "in foster" divided by # of active foster homes
Dog adult equivalent in shelter	# dogs + (# puppies/2.5) For example: 2 dogs and 3 puppies would be equal to 2+(3/2.5) = 3.2 dog adult equivalents.
Cat adult equivalent in shelter	# cats + (# kittens/2.5) For example: 2 cats and 3 kittens would be equal to 2+(3/2.5) = 3.2 cat adult equivalents
Total adult equivalent in foster	2 dogs + 2 cats = 4 adults. 3 puppies + 3 kittens = 6 juveniles/2.5 = 2.4 adult equivalent. Total adult equivalent: 4 + 2.4 = 6.4 adults equivalents in foster homes at month end.

Community Descriptors (1)	U.S.	Mayor's Alliance, NYC, NY	Hillsborough County, FL (Tampa)	Spokane County, WA	Travis County, TX (Austin)	Charleston County, SC	Oklahoma City, OK	Buncombe County, NC	Cleveland City, OH	Shelby County, AL	Sacramento County, CA	Miami-Dade County, FL	Jefferson County, KY (Louisville)	Bernalillo Cty, NM (ABQ)	Mecklenburg Cty, NC (Charlotte)
clockstart		2003	May-07	Aug-07	Jan-07	Apr-08	July-08	July-08	July-08	July-09	July-09	January-11	January-13	January-14	January-14
Human Population 2010 (a)															
Total population, in thousands (2010 Census, 2012 1-Year Estimates)	313,914	8,337	1,278	476	1,096	365	599	244	391	201	1,450	2,591	751	673	969
2018/2013 growth (cumulative, not annual rate)	4%	5%	6%	3%	7%	5%	5%	3%	2%	4%	4%	6%	3%	4%	6%
Percent of population that is urban	81%	100%	97%	86%	95%	89%	93%	76%	100%	77%	98%	100%	99%	96%	99%
Percent of population 18 and over in poverty	14%	19%	17%	15%	16%	15%	16%	16%	31%	7%	17%	18%	15%	16%	14%
Percent of population (civilian non-institutionalized) with no health insurance	15%	14%	19%	13%	19%	18%	21%	18%	17%	10%	16%	29%	13%	16%	17%
Number of Households, in thousands	115,970	3,086	477	189	414	144	229	99	163	75	517	839	308	265	366
Median household income	\$ 51,371	\$ 50,895	\$ 46,515	\$ 47,624	\$ 57,368	\$ 48,593	\$ 43,352	\$ 43,294	\$ 24,257	\$ 65,728	\$ 52,667	\$ 41,400	\$ 45,869	\$ 46,190	\$ 55,295
White Population, in thousands	231,992	3,647	927	423	850	244	405	217	150	163	863	1,967	551	462	558
White Population in percent (c)	74%	44%	73%	89%	78%	67%	68%	89%	38%	81%	59%	76%	73%	69%	58%
Black or African American Population, in thousands	39,623	2,059	213	9	92	105	85	15	211	22	146	488	156	20	298
Black or African American Population in percent (c)	13%	25%	17%	2%	8%	29%	14%	6%	54%	11%	10%	19%	21%	3%	31%
Asian Population, in thousands	15,556	1,091	44	12	64	5	25	2	7	4	217	42	18	15	48
Asian Population in percent (c)	5%	13%	3%	2%	6%	1%	4%	1%	2%	2%	15%	2%	2%	2%	5%
Hispanic Population, in thousands	52,961	2,407	327	23	371	19	105	15	42	12	320	1,667	35	326	121
Hispanic Population in percent (c)	17%	29%	26%	5%	34%	5%	17%	6%	11%	6%	22%	64%	5%	48%	13%
Percent of population that speaks English less than "very well"	9%	23%	10%	3%	13%	3%	10%	N	5%	N	14%	34%	4%	8%	8%
Rental Households, in thousands	41,865	2,108	200	70	201	58	95	35	96	17	227	383	119	99	153
Rental Households as percent of total	36%	68%	42%	37%	49%	41%	41%	35%	59%	23%	44%	46%	39%	37%	42%
Percent of households with no vehicles	9%	57%	7%	8%	6%	8%	7%	7%	27%	3%	8%	12%	10%	7%	7%
Animal Population (b)															
Percent of households with dogs	36.5%	29.0%	35.7%	36.3%	44.0%	38.6%	43.2%	40.3%	36.6%	44.1%	32.8%	35.7%	45.9%	46.0%	40.3%
Average number of dogs per household	1.6	1.4	1.5	1.7	1.8	1.8	2.1	1.7	1.6	1.7	1.6	1.5	1.9	2.0	1.7
Estimated number of owned dogs, in thousands	67,726	1,253	256	117	328	100	207	68	95	56	271	449	268	244	251
Percentage of households with cats	30.4%	29.1%	27.3%	39.0%	28.3%	27.8%	32.6%	29.5%	33.3%	27.4%	28.3%	27.3%	36.8%	32.0%	29.5%
Average number of cats per household	2.1	1.9	2.1	1.8	2.2	2.1	2.2	2.0	2.4	2.5	1.9	2.1	2.1	2.2	2.0
Estimated number of owned cats, in thousands	74,035	1,706	274	133	258	84	164	58	130	51	278	481	238	186	216
Estimated number of owned animals, in thousands	141,761	2,959	529	249	586	184	371	126	225	108	549	930	506	430	467
Estimated number of free-roaming cats in thousands (d)	50,099	1,333	206	82	179	62	99	43	70	32	223	362	133	114	158
Estimated total number of animals, in thousands	191,860	4,292	735	331	765	246	470	169	296	140	772	1,292	639	544	625
Estimated number of owned animals in poverty, in thousands	19,705	547	89	37	93	28	61	20	70	8	94	171	78	69	65
Notes:															
1	Sources: US Census Bureau American FactFinder, 2012 American Community Survey 1 Year Estimates, AVMA US Pet Ownership & Demographics Sourcebook, 2012 Edition (animal population)														
a.	Source: US Census Bureau, American FactFinder: http://factfinder2.census.gov/faces/nav/jsf/pages/searchresults.xhtml?ref=geo&refresh=t														
b.	Source: 2012 U.S. Pet Ownership & Demographics Sourcebook (per AVMA website, published every 5 years) (based on US Census Bureau: 2010 Current Population Survey), Tables 1-8 & 1-13.														
c.	Ethnicities do not add to 100% because Hispanic can include White and Black. Also, white and black are people reporting one race only.														
d.	12% of households feed 3.6 cats each (Levy, J, Woods, J, Turick, S; & Etheridge, D. "Number of Free-roaming Cats in a College Community in the Southern United States and Characteristics of Community Residents who Feed Them." <i>J Am Vet Med Assoc</i> 2003; 223(2): 202-205)														